

GOODWE



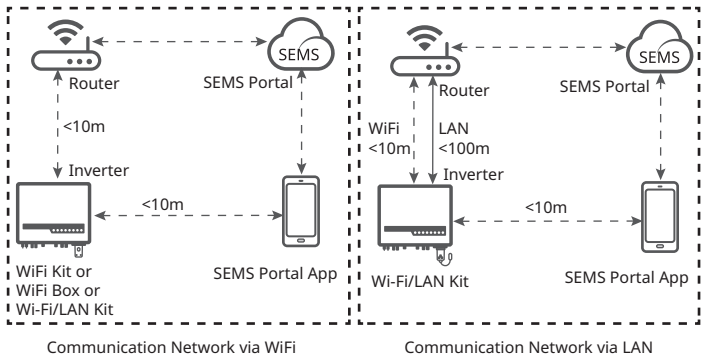
Quick Installation Guide

Communication Module

(Wi-Fi/LAN Kit & WiFi Kit & WiFi Box)

V1.3-2022-09-06

01 Applications



02 Installation

Packing List



WiFi Kit x 1

Or



WiFi Box x 1

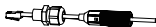
Or



Wi-Fi/LAN Kit x 1



Unlock Tool x 1 [1]

Wire Harness
x 1 [2]5-pin USB adapter
x N [3]

Screw x N [3]



User Manual x 1

[1]: For Wi-Fi/LAN Kit and WiFi Kit.

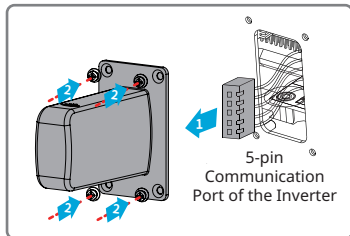
[2]: For Wi-Fi/LAN Kit only.

[3]: N=Quantity depends on the Wi-Fi/LAN Kit configuration.

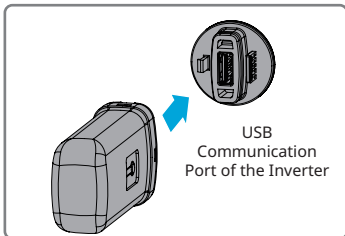
Installing the module

Note: This device should be installed and operated with a minimum distance of 20 cm between the radiator and your body.

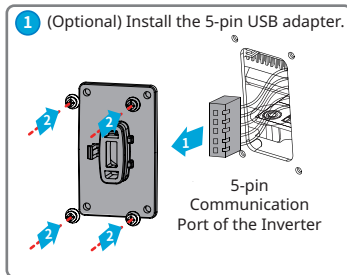
WiFi Box



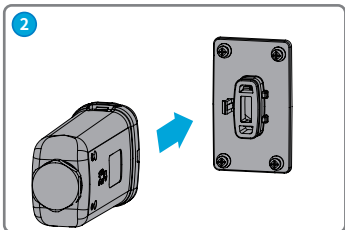
WiFi Kit



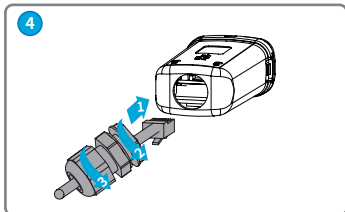
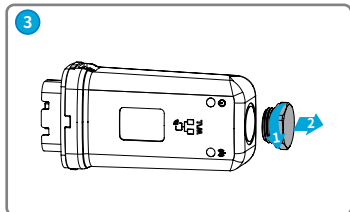
Wi-Fi/LAN Kit



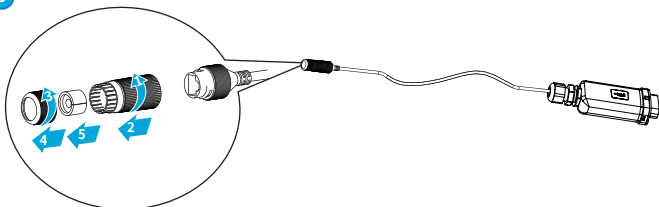
Step 2 for WiFi function only.



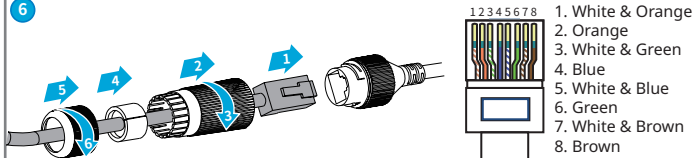
Step 3 - Step7 for LAN function only.



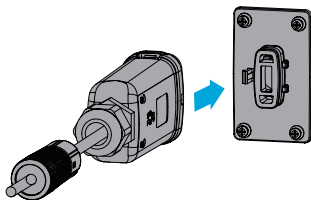
5



6



7





03 Power On

Step 1 Power on the inverter.



Step 2 Power on the router.

Step 3 Check the indicators on the Kit and the inverter to confirm the communication status of the kit.

Wi-Fi/LAN Kit

Indicator	Color	Status	Description
 Power	Green	ON	The Wi-Fi/LAN Kit is powered on.
		OFF	The Wi-Fi/LAN Kit is restarting or not powered on.
 COM	Blue	ON	<ul style="list-style-type: none"> The WiFi communication or LAN communication works properly. The LAN communication is abnormal, but the AP hotspot is connected.
		OFF	<ul style="list-style-type: none"> The Wi-Fi/LAN Kit is restarting or not powered on. The WiFi communication is abnormal. The LAN communication is abnormal, and the AP hotspot is not connected.

WiFi Kit

Indicator	Color	Status	Description
 Power	Green	ON	The WiFi Kit is powered on.
		OFF	The WiFi Kit is restarting or not powered on.
 COM	Blue	ON	The WiFi AP hotspot is connected.
		OFF	<ul style="list-style-type: none"> Improper communication on WiFi Kit. The kit is restarting.

04 Commissioning

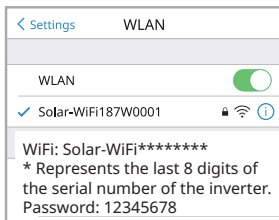
Commissioning via SEMS Portal App

Step 1 Download and install the SEMS Portal App.

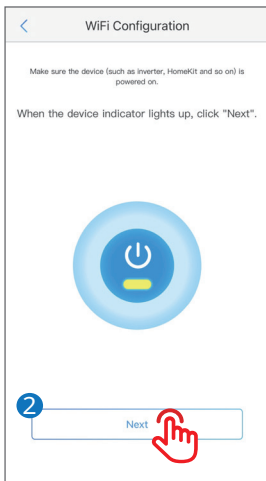
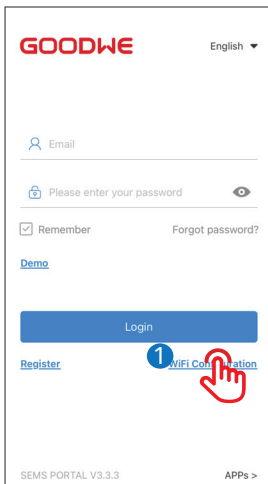


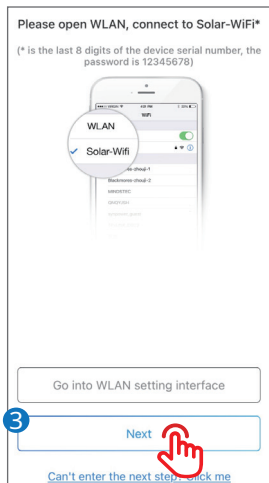
SEMS Portal App

Step 2 Connect the app and the inverter.



Step 3 Network Commissioning of the Kit.





Note: After setting the WiFi Network, the Wi-Fi/LAN Kit will restart automatically and the indicator will be off temporarily. The indicator will be on after restarting.

No.	Parameters	Description
1	Internet access port	For Wi-Fi/LAN Kit only. Select Wi-Fi or LAN .
2	WiFi Network	For WiFi mode only. Set the parameters based on the router network information.
3	Encryption	
4	Password	
5	DHCP	<ul style="list-style-type: none"> Enable DHCP when the router is in dynamic IP mode. Disable DHCP when a switch is used or when the router is in static IP mode.
6	IP Address	<ul style="list-style-type: none"> Do not configure the parameters when DHCP is enabled. Configure the parameters according to the router or switch information when DHCP is disabled.
7	Subnet Mask	
8	Gateway Address	
9	DNS Server	

Commissioning Via Web

Note: Configuring parameters via the web applies to the WiFi Kit and WiFi Box, not the Wi-Fi/LAN Kit.

1 **Log in to 10.10.100.253**
Your password will be sent unencrypted.

2 User Name **admin**

3 Password **admin**

Cancel 4 **Log In**

Wizard

Advanced Management

Device information

Firmware version	V1.1.2.1
MAC address	*****
Wireless AP mode	Enable
SSID	Solar-WiFi123W1234
IP address	10.10.100.253
Wireless STA mode	Enable
Router SSID	TP-LINK_Network
Encryption method	WPA2PSK
Encryption algorithm	AES

Cannot join the network, maybe caused by:

router doesn't exist, or signal is too weak, or password is incorrect.

★**Help:** Wizard will help you to complete setting within 5 **minute.**

5 **Start Setup**

Please select your current wireless network:

SSID	AUTH/ENCRY	RSSI	Channel
<input type="radio"/> Solar-WiFi205G0484	*****	100	6
<input checked="" type="radio"/> TP-LINK_Network	*****	100	6
<input type="radio"/> Solar-WiFi219W0020	*****	100	6
<input type="radio"/> Solar-WiFi203W0661	*****	98	1
<input type="radio"/> Solar-WiFi181W1234	*****	98	6
<input type="radio"/> CODING-LINK	*****	88	1
<input type="radio"/> ...	*****

6

Refresh

★**Note:** When RSSI of the selected WiFi network is lower than 30%, the connection may be unstable, please select other available network or shorten the distance between the device and router.

If your wireless router does not broadcast SSID, please click 'Next' and add a wireless network manually.

Back 7 **Next**

Add wireless network manually:

Network name (SSID)

Encryption method

Encryption algorithm

Please enter the wireless network password:

Password

Show psk

★Note: case sensitive for SSID and Password.
Please make sure all parameters of wireless network are matched with router, including password.

Save success!

The current configuration will take effect after restart.

If you still need to configure the other pages of information, please go to complete your required configuration.

Configuration is complete, you can go to the Management page, click on the restart device "OK" button.

Confirm to complete ?

No.	Parameters	Description
1	Network name (SSID)	Set the parameters based on the router network information.
2	Encryption method	
3	Encryption algorithm	
4	Password	

(Optional) Continue the following steps when the router is in static IP mode.

12 Wizard
Advanced
 Management

Access point setting

Network name(SSID)

Encryption mode

Encryption algorithm

Password(8 to 63 characters)

★Note:config the device's parameters under the access point mode. Save

DHCP setting for STA

IPDHCP Mode

IP address

Subnet mask

Gateway address

DNS server address

★Note:After changing the setting,the device must be restarted. 15 Save

Saved Successfully!

Configurations will take effect after restart.
 After restart, you will need to re-login the configuration interface for other settings, so it is recommended to restart after completing all settings.
 Please click [Restart] to restart now, or click [Back] to continue setting.
 You can restart after all configuration.

16 Restart Back

No.	Parameters	Description
1	IPDHCP Mode	Select STATIC .
2	IP Address	Set the parameters of the WiFi Kit based on the router network information.
3	Subnet Mask	
4	Gateway Address	
5	DNS Server	

05 Password Setting

Log in using the initial password for the first time and change the password as soon as possible. To ensure account security, you are advised to change the password periodically and keep the new password in mind.

Change the password of the Wi-Fi/LAN Kit.

1 Log in to 10.10.100.253
Your password will be sent unencrypted.

2 User Name **admin**

3 Password **admin**

Cancel **4** Log In

1 Mode Settings
AP Settings
STA Settings
Device Management

Wireless Network

Network Mode 11b/g/n mixed mode

Network Name(SSID) Solar-WiFi203W013 Hide

BSSID 34-EA-E7-D4-6A-88

Frequency (Channel) Auto

Submit Reset

Solar-WiFi203W0013

Security Mode WPA2-PSK

WPA

WPA Algorithms TKIP AES

TKIP/AES

Key

3 Submit Reset

4 Restart button in Device Management

Mode Settings
AP Settings
STA Settings
Device Management

Set successfully, restart to use new setting.

Mode Settings	Restart Module
AP Settings	Restart Module 5 Restart
STA Settings	Load Factory Defaults
Device Management	Load Factory Defaults Load Default

Note: The indicator will be off temporarily when the Wi-Fi/LAN Kit is restarting and be on again after restarting.

Reconnect WiFi after resetting the Wi-Fi/LAN Kit.

Change the password of the WiFi Kit/WiFi Box

1 Log in to 10.10.100.253
Your password will be sent unencrypted.

2 User Name **admin**

3 Password **admin**

Cancel **4** Log In

1 Wizard
Advanced
Management

Access point setting

Network name (SSID)

Encryption mod

Encryption algorithm

Password (8 to 63 characters) **2**

Note: config the device's parameter under the access point mode.

3 Save

DHCP setting for STA

IP DHCP Mode

IP address

Subnet mask

Gateway address

DNS server address

Note: After changing the setting, the device must be restarted.

Save

Wizard

Advanced

Management

Saved Successfully!

Configurations will take effect after restart.
After restart, you will need to re-login the configuration interface for other settings, so it is recommended to restart after completing all settings.
Please click [Restart] to restart now, or click [Back] to continue setting.
You can restart after all configuration.

4

Restart

Back

Restart/Reload Default success!

06 Device Replacement

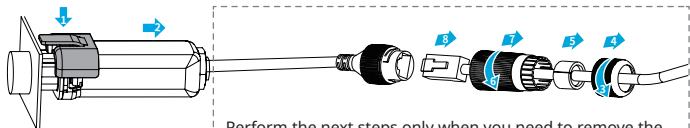
Step 1 Prepare the new device before replacing the device.

Step 2 Remove the device using the Unlock Tool.

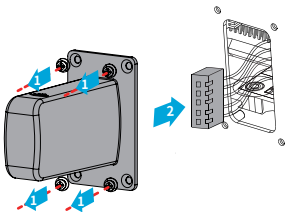
Step 3 Install the new device.

Step 4 Refer to the device Quick Installation Guide to configure the device.

For Wi-Fi/LAN Kit and WiFi Kit.



For WiFi Box.



07 Troubleshooting

No.	Problem	Solutions
1	Cannot find Solar-WiFi**	<ol style="list-style-type: none"> 1. Make sure that the inverter is powered on and the Wi-Fi/LAN Kit is connected properly. 2. Make sure that the smart device is within the communication range of the Wi-Fi/LAN Kit. 3. Restart the inverter.
2	Unable to connect to Solar-WiFi**	<ol style="list-style-type: none"> 1. Enter the password: 12345678. 2. Make sure that no other smart device is connected to Solar-WiFi**. 3. Restart the inverter and reconnect Solar-WiFi**. 4. Make sure the password is correct.
3	Cannot log in to 10.10.100.253	<ol style="list-style-type: none"> 1. Switch browsers like Google Chrome, Firefox, IE, Safari. 2. Restart the inverter and reconnect the WiFi.
4	Cannot find router SSID	<ol style="list-style-type: none"> 1. Put the router nearer to the inverter. Or add some WiFi relay devices. 2. Check if the channel number of router is higher than 13. If yes, modify it into a lower number at router configuration page.
5	WiFi LED indicator blinks twice continuously with all configuration steps done	<ol style="list-style-type: none"> 1. Restart the inverter. 2. Check if the SSID, encryption method, encryption algorithm and password on WiFi configuration page is the same with that of Wireless Router, if it is different, please modify it. 3. Restart Wireless Router. 4. Move Wireless Router closer to the inverter or use a wireless repeater to enhance WiFi signal.
6	WiFi LED indicator blinks four times continuously when all configuration steps done	<ol style="list-style-type: none"> 1. Connect smart device to network and access to SEMS Portal App to check if the inverter is online. 2. Restart Wireless Router and the inverter.

08 Technical Data

EN

	Model	Wi-Fi/LAN Kit	WiFi Kit	WiFi Box
General Data	Input Voltage	5V		
	Power Consumption	≤ 2W		
	Dimension (L x W x Dmm)	102 x 49 x 32	96 x 49 x 32 or 96 x 46 x 29	71.5 x 65x39.5
	Operating Temperature	-30 ~ 60°C		
	Operating Humidity	0 ~ 100% RH (No Condensation)		
	Operating Altitude	<4000m		
	Ingress Protection Rating	IP65		
Comm Data	Port	RJ45	-	
	Extension Cable of LAN	0.5m	-	
	Communication	LAN or WiFi	WiFi	
	Transmission Rate	UART: 115200bps Ethernet: 10Mbps /100Mbps	UART: 9600bps	
	Max. Network Cable Transmission Distance	100m	-	
	Frequency Range	2.412GHz-2.472GHz		
	Supported Standards	802.11 b/g/n		
	Supported Device	Router or Switch	Router	
	RF Outpower	< 20 dBm		
Software Data	Configuration	App or Web		
	Language	English		
	Working Mode	AP/STA/AP+STA		

09 EU Declaration of Conformity

EN

GoodWe Technologies Co., Ltd. hereby declares that the communication device sold in the European market meets the requirements of the following directives:

- Radio Equipment Directive 2014/53/EU (RED)
- Restrictions of Hazardous Substances Directive 2011/65/EU and (EU) 2015/863 (RoHS)
- Waste Electrical and Electronic Equipment 2012/19/EU
- Registration, Evaluation, Authorization and Restriction of Chemicals (EC) No 1907/2006 (REACH)

You can download the EU Declaration of Conformity on <https://en.goodwe.com>.

08 Технически данни

BG

Модел		Wi-Fi/LAN Kit	WiFi Kit	WiFi Box
Общи данни	Входно напрежение	5 V		
	Консумация на енергия	≤ 2 W		
	Размери (В x Ш x Д мм)	102 x 49 x 32	96 x 49 x 32 или 96 x 46 x 29	71,5 x 65 x 39,5
	Работна температура	-30 ~ 60°C		
	Работна влажност	Относителна влажност 0 ~ 100% (без кондензация)		
	Работна височина	< 4000 м		
	Клас на водо- и прахоустойчивост	IP65		
Ком. данни	Порт	RJ45	-	
	Удължителен кабел или LAN	0,5 м	-	
	Комуникация	LAN или Wi-Fi	Wi-Fi	
	Скорост на пренос	UART: 115200 bps Ethernet: 10 Mbps/100 Mbps	UART: 9600 bps	
	Макс. разстояние на пренос на мрежов кабел	100 м	-	
	Честотен диапазон	2,412 GHz – 2,472 GHz		
	Поддържани стандарти	802.11 b/g/n		
	Поддържано устройство	Рутер или суич	Рутер	
Софтуерни данни	Конфигурация	Приложение или интернет		
	Език	Английски		
	Режим на работа	AP/STA/AP+STA		

09 Декларация за съответствие на ЕС

BG

С настоящото GoodWe Technologies Co., Ltd. декларира, че комуникационното устройство, продавано на европейския пазар, отговаря на изискванията на следните директиви:

- Директива относно радиосъоръженията 2014/53/EC (RED)
- Директива относно употребата на опасни вещества 2011/65/EC и (EC) 2015/863 (RoHS)
- Директива относно отпадъци от електрическо и електронно оборудване 2012/19/EC
- Регламент (ЕО) № 1907/2006 относно регистрацията, оценката, разрешаването и ограничаването на химикали (REACH)

За по-подробни декларации за съответствие посетете адрес <https://en.goodwe.com>.

08 Technické údaje
CS

	Model	Wi-Fi/LAN Kit	WiFi Kit	WiFi Box
Všeobecné údaje	Vstupné napětí	5 V		
	Spotřeba energie	≤ 2 W		
	Rozměry D × Š × H (mm)	102 x 49 x 32	96 × 49 × 32 nebo 96 × 46 × 29	71,5 × 65 × 39,5
	Provozní teplota	-30~60 °C		
	Provozní vlhkost	0~100 % RH (bez kondenzace)		
	Provozní nadmořská výška	< 4 000 m		
	Hodnocení ochrany proti vniknutí	IP65		
Komunikační údaje	Port	RJ45	-	
	Prodlužovací LAN kabel	0,5 m	-	
	Sdělení	LAN nebo WiFi	WiFi	
	Přenosová rychlost	UART: 115 200 bps Ethernet: 10 Mbps /100 Mbps	UART: 9 600 bps	
	Max. přenosová vzdálenost síťového kabelu	100 m	-	
	Frekvenční rozsah	2,412 GHz~2,472 GHz		
	Podporované standardy	802.11 b/g/n		
	Podporované zařízení	Router nebo Switch	Router	
Softwarové údaje	Konfigurace	Aplikace nebo Web		
	Jazyk	Angličtina		
	Pracovní režim	AP/STA/AP+STA		

09 EU prohlášení o shodě
CS

Společnost GoodWe Technologies Co., Ltd. tímto prohlašuje, že komunikační zařízení, prodávané na evropském trhu, splňuje požadavky následujících směrnic:

- Směrnice o rádiových zařízeních 2014/53/EU (RED)
 - Směrnice o omezeních nebezpečných látek 2011/65/EU a (EU) 2015/863 (RoHS)
 - Odpadní elektrická a elektronická zařízení 2012/19/EU
 - Registrace, hodnocení, povolování a omezování chemických látek (ES) č. 1907/2006 (REACH)
- Pro podrobnější prohlášení o shodě navštivte <https://en.goodwe.com>.

08 Tekniske data

DA

	Model	Wi-Fi/LAN Kit	WiFi Kit	WiFi Box
Generelle data	Indgangsspænding	5 V		
	Strømforbrug	≤ 2 W		
	Dimensioner (L x B x D mm)	102 x 49 x 32	96 x 49 x 32 eller 96 x 46 x 29	71,5 x 65 x 39,5
	Temperatur ved drift	-30 ~ 60 °C		
	Luftfugtighed ved drift	0 ~ 100 % RH (Ikke-kondenserende)		
	Højde over havet ved drift	< 4000 m		
	Kapslingsgrad	IP65		
Comm-data	Port	RJ45	-	
	Forlænger kabel til LAN	0,5 m	-	
	Kommunikation	LAN eller WiFi	WiFi	
	Overførselshastighed	UART: 115200 bps Ethernet: 10 Mbps /100 Mbps	UART: 9600 bps	
	Maks. transmissionsafstand med netværkskabel	100 m	-	
	Frekvensinterval	2,412 GHz-2,472 GHz		
	Understøttede standarder	802.11 b/g/n		
	Understøttet enhed	Router eller switch	Router	
Software data	Konfiguration	App eller web		
	Sprog	Engelsk		
	Arbejdsmodus	AP/STA/AP+STA		

09 EU-overensstemmelseserklæring

DA

GoodWe Technologies Co., Ltd. erklærer hermed, at kommunikationsenheden, som sælges på det europæiske marked, opfylder kravene i følgende direktiver:

- Direktiv om radioudstyr 2014/53/EU (RED)
- Direktiv om begrænsning af anvendelsen af visse farlige stoffer 2011/65/EU og (EU) 2015/863 (RoHS)
- Affald af elektrisk og elektronisk udstyr 2012/19/EU
- Registration, Evaluation, Authorization and Restriction of Chemicals (EF) nr. 1907/2006 (REACH)

Mere detaljerede oplysninger vedr. overensstemmelseserklæringer fås på <https://en.goodwe.com>.

08 Technische Daten

DE

Modell		Wi-Fi/LAN Kit	WiFi Kit	WiFi Box
Allgemeine Daten	Eingangsspannung	5 V		
	Leistungsaufnahme	≤ 2 W		
	Abmessungen (L x B x T in mm)	102 x 49 x 32	96 x 49 x 32 bzw. 96 x 46 x 29	71,5 x 65 x 39,5
	Betriebstemperatur:	-30 bis 60 °C		
	Betriebsfeuchtigkeit	0 bis 100 % rF (keine Kondensation)		
	Betriebshöhe	<4000 m		
	Schutzart	IP65		
Kommunikationsdaten	Port	RJ45	-	
	Verlängerungskabel bzw. LAN	0,5 m	-	
	Kommunikation	LAN bzw. WLAN	WiFi	
	Übertragungsrate	UART: 115200 Bit/s Ethernet: 10 Mbit/s / 100 Mbit/s	UART: 9600 Bit/s	
	Max. Netzkabel- Übertragungslänge	100 m	-	
	Frequenzbereich	2,412 GHz-2,472 GHz		
	Unterstützte Normen	802.11 b/g/n		
	Unterstütztes Gerät	Router bzw. Switch	Router	
Softwaredaten	Konfiguration	App bzw. Web		
	Sprache	Englisch		
	Betriebsmodus	AP/STA/AP+STA		

09 EU-Konformitätserklärung

DE

GoodWe Technologies Co., Ltd. erklärt hiermit, dass das auf dem europäischen Markt verkaufte Kommunikationsgerät die Anforderungen der folgenden Richtlinien erfüllt:

- Richtlinie 2014/53/EU (Funkanlagenrichtlinie)
- Richtlinie 2011/65/EU (Beschränkung der Verwendung bestimmter gefährlicher Stoffe in Elektro- und Elektronikgeräten) sowie Richtlinie 2015/863 (RoHS)
- Richtlinie 2012/19/EU (Entsorgung von Elektro- und Elektronik-Altgeräten)
- Richtlinie 1907/2006 (Registrierung, Bewertung, Zulassung und Beschränkung von Chemikalien, kurz: REACH)

Für weitere Infos zur Konformitätserklärung siehe <https://en.goodwe.com>.

08 Τεχνικά στοιχεία

EL

Μοντέλο		Wi-Fi/LAN Kit	WiFi Kit	WiFi Box
Γενικά στοιχεία	Τάση εισόδου	5V		
	Κατανάλωση ισχύος	≤ 2W		
	Διαστάσεις(Μ x Π x Βmm)	102 x 49 x 32	96 x 49 x 32 ή 96 x 46 x 29	71,5 x 65x39,5
	Θερμοκρασία λειτουργίας	-30 ~ 60°C		
	Υγρασία λειτουργίας	0 ~ 100% RH (χωρίς συμπύκνωση)		
	Υψόμετρο λειτουργίας	<4000m		
	Βαθμός προστασίας από εισχώρηση	IP65		
Δεδομένα επικοινωνίας	Θύρα	RJ45	-	
	Καλώδιο επέκτασης LAN	0,5m	-	
	Επικοινωνία	LAN ή WiFi	WiFi	
	Ταχύτητα μετάδοσης	UART: 115200bps Ethernet: 10Mbps /100Mbps	UART: 9600bps	
	Μέγιστη απόσταση μετάδοσης καλωδίου δικτύου	100m	-	
	Εύρος συχνότητας	2,412GHz-2,472GHz		
	Υποστηριζόμενες προδιαγραφές	802.11 b/g/n		
	Υποστηριζόμενη συσκευή	Δρομολογητής ή διακόπτης	Δρομολογητής	
Δεδομένα λογισμικού	Διαμόρφωση	Εφαρμογή ή διαδίκτυο		
	Γλώσσα	Αγγλικά		
	Τρόπος λειτουργίας	AP/STA/AP+STA		

09 Δήλωση συμμόρφωσης E.E.

EL

Η GoodWe Technologies Co., Ltd. δηλώνει διά του παρόντος ότι η συσκευή επικοινωνίας που πωλείται στην ευρωπαϊκή αγορά πληροί τις απαιτήσεις των ακόλουθων οδηγιών:

- Οδηγία ραδιοεξοπλισμών 2014/53/EE (RED)
- Οδηγία περιορισμών χρήσης επικίνδυνων ουσιών 2011/65/EE και (EE) 2015/863 (RoHS)
- Απόβλητα ηλεκτρικού και ηλεκτρονικού εξοπλισμού 2012/19/EE
- Καταχώρηση, αξιολόγηση, αδειοδότηση και περιορισμός των χημικών ουσιών (EK) αρ. 1907/2006 (REACH)

Για αναλυτικότερες δηλώσεις συμμόρφωσης, επισκεφθείτε την ιστοσελίδα <https://en.goodwe.com>.

08 Datos técnicos

ES

Modelo		Wi-Fi/LAN Kit	WiFi Kit	WiFi Box
Datos generales	Tensión de entrada	5 V		
	Consumo de potencia	≤ 2 W		
	Dimensiones (la x an x pr mm)	102 x 49 x 32	96 x 49 x 32 o 96 x 46 x 29	71,5 x 65 x 39,5
	Temperatura de funcionamiento	-30 ~ 60 °C		
	Humedad de funcionamiento	Humedad relativa 0 ~ 100 % (sin condensación)		
	Altitud de funcionamiento	<4000 m		
	Grado de protección	IP65		
Datos de comunicación	Puerto	RJ45	-	
	Cable de extensión de LAN	0,5 m	-	
	Comunicación	LAN o WiFi	WiFi	
	Velocidad de transmisión	UART: 115200bps Ethernet: 10Mbps/100Mbps	UART: 9600bps	
	Distancia máx. de transmisión del cable de red	100 m	-	
	Rango de frecuencia	2,412 GHz - 2,472 GHz		
	Estándares compatibles	802.11 b/g/n		
	Dispositivo compatible	Enrutador o conmutador	Enrutador	
Datos del software	Configuración	Aplicación o web		
	Idioma	Inglés		
	Modo de funcionamiento	AP/STA/AP+STA		

09 Declaración de conformidad de la UE

ES

GoodWe Technologies Co., Ltd. declara por la presente que el dispositivo de comunicación comercializado en el mercado europeo cumple los requisitos de las siguientes Directivas:

- Directiva sobre equipos radioeléctricos 2014/53/UE (DER)
- Directiva sobre restricciones de sustancias peligrosas 2011/65/UE y (UE) 2015/863 (RoHS)
- Residuos de aparatos eléctricos y electrónicos 2012/19/UE
- Registro, evaluación, autorización y restricción de sustancias químicas (CE) n.º 1907/2006 (REACH)

Para obtener declaraciones de conformidad más detalladas, acceda a <https://en.goodwe.com>.

08 Tehnilised andmed

ET

Mudel		Wi-Fi/LAN Kit	WiFi Kit	WiFi Box
Üldandmed	Sisendpinge	5 V		
	Võimsustarve	≤ 2 W		
	Mõõtmed (P x L x S mm)	102 x 49 x 32	96 x 49 x 32 või 96 x 46 x 29	71,5 x 65 x 39,5
	Töötemperatuur	-30 ~ 60 °C		
	Niiskustingimused	0-100% suhteline niiskus (ilma kondensatsioonita)		
	Töökõrgus merepinnast	< 4000 m		
	Sissepääsu kaitse reiting	IP65		
Sideandmed	Port	RJ45	-	
	LAN-i pikenduskaabel	0,5m	-	
	Side	LAN või Wi-Fi	Wi-Fi	
	Edastuskiirus	UART: 115200 bps Ethernet: 10 Mbps /100 Mbps	UART: 9600 bps	
	Max võrgukaabli edastuskaugus	100 m	-	
	Sagedusvahemik	2,412 GHz - 2,472 GHz		
	Toetatud standardid	802.11 b/g/n		
	Toetatud seade	Ruuter või kommutaator	Ruuter	
Tarkvaraandmed	Konfiguratsioon	Rakendus või veeb		
	Keel	Inglise		
	Töörežiim	AP/STA/AP+STA		

09 ELi vastavusdeklaratsioon

ET

GoodWe Technologies Co., Ltd. deklareerib käesolevaga, et sideseade, mida müüakse Euroopa turul, vastab järgmiste direktiivide nõuetele:

- Raadioseadmete direktiiv 2014/53/EL (RED)
- Ohtlike ainete kasutamise piiramist käsitlev direktiiv 2011/65/EL ja (EL) 2015/863 (RoHS)
- Elektri- ja elektroonikaseadmete jäätmete direktiiv 2012/19/EL
- Kemikaalide registreerimise, hindamise, autoriseerimise ja piiramise direktiiv (EÜ) nr 1907/2006 (REACH)

Üksikasjalikumad vastavusdeklaratsioonid leiate aadressilt <https://en.goodwe.com>.

08 Tekniset tiedot

FI

Malli		Wi-Fi/LAN Kit	WiFi Kit	WiFi Box
Yleiset tiedot	Tulojännite	5 V		
	Virrankulutus	≤ 2 W		
	Mitat (P x L x S mm)	102 x 49 x 32	96 x 49 x 32 tai 96 x 46 x 29	71,5 x 65 x 39,5
	Käyttölämpötila	-30 ~ 60 °C		
	Käyttöympäristön kosteus	0 ~ 100 % RH (ei tiivistymistä)		
	Käyttöympäristön korkeus	< 4000 m		
	Tulon suojausluokitus	IP65		
Tiedonsiirtotiedot	Portti	RJ45	-	
	LAN-jatkojohto	0,5 m	-	
	Tiedonsiirto	LAN tai WiFi	Wi-Fi	
	Tiedonsiirtonopeus	UART: 115200 bps Ethernet: 10 Mbps / 100 Mbps	UART: 9600 bps	
	Verkkokaapelin tiedonsiirtoetäisyys enintään	100 m	-	
	Taajuusväli	2,412 - 2,472 GHz		
	Tuetut standardit	802.11 b/g/n		
	Tuettu laite	Reititin tai kytkin	Reititin	
Ohjelmistotiedot	Määrittelykset	Sovellus tai verkko		
	Kieli	Englanti		
	Käyttötila	AP/STA/AP+STA		

09 EU-vaatimustenmukaisuusvakuutus

FI

GoodWe Technologies Co., Ltd. vakuuttaa täten, että Euroopan markkinoilla myytävä tiedonsiirtolaite täyttää seuraavien direktiivien vaatimukset:

- Radiolaitedirektiivi 2014/53/EU (RED)
- Vaarallisten aineiden rajoituksia koskeva direktiivi 2011/65/EU ja (EU) 2015/863 (RoHS)
- Sähkö- ja elektroniikkalaiteromu 2012/19/EU
- Kemikaalien rekisteröinti, arviointi, luvat ja rajoittaminen (EY) Nro 1907/2006 (REACH)

Katso tarkemmat vaatimustenmukaisuusvakuutukset osoitteesta <https://en.goodwe.com>.

08 Données techniques

FR

Modèle		Wi-Fi/LAN Kit	WiFi Kit	WiFi Box
Données générales	Tension d'entrée	5 V		
	Consommation électrique	≤ 2 W		
	Dimensions (L x l x P) (mm)	102 x 49 x 32	96 x 49 x 32 ou 96 x 46 x 29	71,5 x 65 x 39,5
	Température de fonctionnement	-30 ~ 60 °C		
	Humidité de fonctionnement	0 ~ 100 % HR (pas de condensation)		
	Altitude de fonctionnement	< 4 000 m		
	Indice de protection	IP65		
Données de communication	Port	RJ45	-	
	Câble d'extension LAN	0,5 m	-	
	Communication	LAN ou Wi-Fi	Wi-Fi	
	Taux de transmission	UART : 115 200 bps Ethernet : 10 Mbps /100 Mbps	UART : 9 600 bps	
	Distance de transmission max. du câble réseau	100 m	-	
	Plage de fréquence	2,412 GHz-2,472 GHz		
	Normes prises en charge	802.11 b/g/n		
	Appareil pris en charge	Routeur ou commutateur	Routeur	
Données de logiciel	Configuration	Application ou Web		
	Langue	Anglais		
	Mode de fonctionnement	AP/STA/AP+STA		

09 Déclaration de conformité UE

FR

GoodWe Technologies Co., Ltd. déclare par la présente que l'appareil de communication vendu sur le marché européen répond aux exigences des directives suivantes :

- Directive 2014/53/UE relative aux équipements radioélectriques (Directive RED)
- Directive 2011/65/UE et directive (UE) 2015/863 concernant la limitation de l'utilisation de certaines substances dangereuses (RoHS)
- Directive 2012/19/UE relative aux déchets d'équipements électriques et électroniques
- Règlement (CE) N° 1907/2006 relatif à l'enregistrement, l'évaluation et l'autorisation des substances chimiques (REACH)

Pour plus d'informations sur les déclarations de conformité, consultez le site <https://en.goodwe.com>.

08 Tehnički podaci

Model	Wi-Fi/LAN Kit	WiFi Kit	WiFi Box	
Opći podaci	Ulazni napon	5 V		
	Potrošnja energije	≤ 2 W		
	Dimenzije (duljina x širina x dubina mm)	102 x 49 x 32	96 x 49 x 32 ili 96 x 46 x 29	71,5 x 65 x 39,5
	Radna temperatura	-30 ~ 60 °C		
	Vlažnost zraka tijekom rada	relativna vlažnost 0 ~ 100 % (bez kondenzacije)		
	Visina rada	<4000 m		
	Klasa zaštite od prodora	IP65		
Komunikacijski podaci	Priključak	RJ45	-	
	Produžni kabel za LAN	0,5 m	-	
	Komunikacija	LAN ili WiFi	WiFi	
	Stopa prijenosa	UART: 115200 bps Ethernet: 10 Mbps /100 Mbps	UART: 9600bps	
	Maks. udaljenost za prijenos mrežnog kabela	100m	-	
	Raspon frekvencije	2,412 Ghz ~ 2,472 GHz		
	Podržani standardi	802,11 b/g/n		
Podržani uređaj	Usmjerivač ili prekidač	Usmjerivač		
Podaci o softveru	Konfiguracija	Aplikacija ili internet		
	Jezik	Engleski		
	Način rada	AP/STA/AP+STA		

09 EU izjava o sukladnosti

Ovime tvrtka GoodWe Technologies Co., Ltd. izjavljuje da komunikacijski uređaj, koji se prodaje na europskom tržištu, ispunjava zahtjeve sljedećih direktiva:

- Direktiva 2014/53/EU o radijskoj opremi (RED)
- Direktiva 2011/65/EU o ograničenju uporabe određenih opasnih tvari i (EU) 2015/863 (RoHS)
- Direktiva 2012/19/EU o otpadnoj električnoj i elektroničkoj opremi
- Uredba (EZ) br. 1907/2006 o registraciji, evaluaciji, autorizaciji i ograničavanju kemikalija (REACH)

Detaljnije izjave o sukladnosti možete pronaći na poveznici <https://en.goodwe.com>.

08 Műszaki adatok

HU

Modell		Wi-Fi/LAN Kit	WiFi Kit	WiFi Box
Általános adatok	Bemeneti feszültség	5 V		
	Teljesítményfelvétel	≤ 2 W		
	Méretek (H x Sz x M mm)	102 x 49 x 32	96 x 49 x 32 vagy 96 x 46 x 29	71,5 x 65 x 39,5
	Üzemi hőmérséklet	-30~60 °C		
	Üzemi környezet páratartalma	0~100% relatív páratartalom (kondenzáció nélkül)		
	Működési magasság	< 4000 m		
	Behatolásvédelmi besorolás	IP65		
Komm. adatok	port	RJ45	-	
	LAN hosszabbítókábel	0,5 m	-	
	Kommunikáció	LAN vagy Wi-Fi	Wi-Fi	
	Átviteli sebesség	UART: 115200bps Ethernet: 10Mbps/100Mbps	UART: 9600bps	
	Hálózati kábel max. átviteli távolsága	100 m	-	
	Frekvenciatartomány	2,412~2,472 GHz		
	Támogatott szabványok	802.11 b/g/n		
	Támogatott eszközök	Router vagy Switch	Router	
Szoftveradatok	Konfiguráció	Alkalmazás vagy web		
	Nyelv	Angol		
	Üzem mód	AP/STA/AP+STA		

09 EU megfeleléségi nyilatkozat

HU

A GoodWe Technologies Co., Ltd. ezennel kijelenti, hogy az európai piacon értékesített kommunikációs eszköz megfelel az alábbi irányelvek követelményeinek:

- A rádióberendezések forgalmazására vonatkozó 2014/53/EU irányelv (RED)
- Elektromos és elektronikus berendezések veszélyes anyagainak korlátozásáról szóló 2011/65/EU és 2015/863/EU irányelv (RoHS)
- Az elektromos és elektronikus berendezések hulladékairól szóló 2012/19/EU irányelv
- A vegyi anyagok regisztrálásáról, értékeléséről, engedélyezéséről és korlátozásáról szóló 1907/2006/EK irányelv (REACH)

A részletesebb megfeleléségi nyilatkozatért látogasson el a <https://en.goodwe.com> weboldalra.

08 Dati tecnici

IT

Modello		Wi-Fi/LAN Kit	WiFi Kit	WiFi Box
Dati generali	Tensione in ingresso	5 V		
	Potenza assorbita	≤ 2 W		
	Dimensioni (L x P x A mm)	102 x 49 x 32	96 x 49 x 32 o 96 x 46 x 29	71,5 x 65 x 39,5
	Temperatura operativa	-30 ~ 60 °C		
	Umidità di esercizio	0~100% RH (non condensante)		
	Altitudine operativa	< 4000 m		
	Grado di protezione	IP65		
Dati comun.	Porta	RJ45	-	
	Cavo di prolunga LAN	0,5 m	-	
	Comunicazione	LAN o WiFi	WiFi	
	Velocità di trasmissione	UART: 115200 bps Ethernet: 10 Mbps /100 Mbps	UART: 9600 bps	
	Distanza di trasmissione max. cavo di rete	100 m	-	
	Gamma di frequenza	2,412 GHz - 2,472 GHz		
	Standard supportati	802.11 b/g/n		
	Dispositivo supportato	Router o switch	Router	
Dati software	Configurazione	App o web		
	Lingua	Inglese		
	Modalità operativa	AP/STA/AP+STA		

09 Dichiarazione di conformità UE

IT

GoodWe Technologies Co., Ltd. dichiara che il dispositivo di comunicazione venduto nel mercato europeo soddisfa i requisiti delle seguenti direttive:

- Direttiva apparecchiature radio 2014/53/UE (RED)
- Direttiva 2011/65/UE sulla restrizione delle sostanze pericolose e (UE) 2015/863 (RoHS)
- Rifiuti di apparecchiature elettriche ed elettroniche 2012/19/UE
- Registrazione, valutazione, autorizzazione e restrizione delle sostanze chimiche (CE) n. 1907/2006 (REACH)

Per dichiarazioni di conformità più dettagliate visitare <https://en.goodwe.com>.

08 Techniniai duomenys

LT

Modelis		Wi-Fi/LAN Kit	WiFi Kit	WiFi Box
Bendrieji duomenys	Įvesties įtampa	5 V		
	Energijos sąnaudos	≤ 2W		
	Matmenys (L x W x Dmm)	102 x 49 x 32	96 x 49 x 32 arba 96 x 46 x 29	71,5 / 65 x 39,5
	Darbinė temperatūra	-30 ~ 60°C		
	Darbinė drėgmė	0 ~ 100% RH (be kondensacijos)		
	Darbinis aukštis	< 4000 m		
	Apsaugos nuo išorinio poveikio klasė	IP65		
Ryšio duomenų	Prievadas	RJ45	-	
	LAN ilginamasis kabelis	0,5 m	-	
	Ryšys	LAN arba WiFi	WiFi	
	Perdavimo sparta	UART: 115200 bps Ethernet: 10 Mbps / 100 Mbps	UART: 9600bps	
	Didž. tinklo kabelio perdavimo atstumas	100m	-	
	Dažnių diapozonas	2,412 GHz - 2,472 GHz		
	Palaikomi standartai	802,11 b/g/n		
Palaikomas įrenginys	Maršrutizatorius arba jungiklio	Maršrutizatorius		
Programos duomenys	Nustatymas	Programėlė arba svetainė		
	Kalba	Anglų k.		
	Darbinis režimas	AP/STA/AP+STA		

09 ES atitikties deklaracija

LT

Šiuo dokumentu „GoodWe Technologies Co., Ltd.“ pareiškia, kad Europos rinkoje parduodamas ryšio įrenginys atitinka šių direktyvų reikalavimus:

- Radijo įrangos direktyvą 2014/53/EU (RED),
- Pavojingų medžiagų naudojimo apribojimo direktyvą 2011/65/EU ir (EU) 2015/863 (RoHS),
- Elektros ir elektroninės įrangos atliekų direktyvą 2012/19/EU,
- Nuostatos dėl cheminių medžiagų registracijos, įvertinimo, autorizacijos ir apribojimų (EK) Nr. 1907/2006 (REACH).

Daugiau informacijos apie atitiktį rasite apsilankę adresu <https://en.goodwe.com>.

08 Tehniskie dati

LV

Modelis		Wi-Fi/LAN Kit	WiFi Kit	WiFi Box
Vispārīgi dati	Ievades jauda	5V		
	Jaudas patēriņš	≤ 2 W		
	Izmēri (G x P x D mm)	102 x 49 x 32	96 x 49 x 32 vai 96 x 46 x 29	71,5 x 65x39,5
	Darba temperatūra	-30~ 60°C		
	Darba mitruma līmenis	0 ~ 100 % RH (Nav kondensāta)		
	Ekspluatācijas augstums	<4000 m		
	Aizsardzības klase	IP65		
Comm dati	Ports	RJ45	-	
	LAN pagarinātāja kabelis	0,5m	-	
	Sakari	LAN vai WiFi	WiFi	
	Pārraides ātrums	UART: 115200bps Ethernet tīkls: 10Mbps /100Mbps	UART: 9600bps	
	Maks. tīkla kabeļa pārraides attālums	100m	-	
	Frekvences diapazons	2,412 Ghz-2,472 GHz		
	Atbalstītie standarti	802.11 b/g/n		
Atbalstītā ierīce	Maršrutētājs vai pārslēgs	Maršrutētājs		
Programmatūras dati	Konfigurācija	Lietotne vai tīkls		
	Valoda	Angļu		
	Darba režīms	AP/STA/AP+STA		

09 EU-Konformitātes deklarācija

LV

GoodWe Technologies Co., Ltd. Ar šo deklarē, ka sakaru ierīce, kas tiek pārdota Eiropas tirgū, atbilst šādu direktīvu prasībām:

- Radio iekārtu direktīva 2014/53/ES (RED)
- Bīstamu vielu ierobežošanas direktīva 2011/65/ES un (ES) 2015/863 (RoHS)
- Direktīva 2012/19/ES par elektrisko un elektronisko iekārtu atkritumiem
- Ķīmikāliju reģistrācija, novērtēšana, licencēšana un ierobežošana (EK) Nr. 1907/2006 (REACH)

Detalizētākas atbilstības deklarācijas skatiet vietnē <https://en.goodwe.com>.

08 Technische gegevens

NL

Model		Wi-Fi/LAN Kit	WiFi Kit	WiFi Box
Algemene gegevens	Ingangsspanning	5 V		
	Stroomverbruik	≤ 2 W		
	Afmetingen (L x B x D mm)	102 x 49 x 32	96 x 49 x 32 of 96 x 46 x 29	71,5 x 65 x 39,5
	Bedrijfstemperatuur	-30 – 60 °C		
	Vochtigheidsgraad tijdens bedrijf	0 ~ 100% RV (geen condens)		
	Gebruikshoogte	< 4000 m		
	Beschermingsklasse tegen indringing	IP65		
Comm-gegevens	Poort	RJ45	-	
	Verlengkabel of LAN	0,5 m	-	
	Communicatie	LAN of wifi	Wifi	
	Overdrachtssnelheid	UART: 115200 bps Ethernet: 10M bps/100 Mbps	UART: 9600 bps	
	Max. transmissieafstand van de netwerkkabel	100 m	-	
	Frequentiebereik	2,412 Ghz-2,472 GHz		
	Ondersteunde normen	802.11 b/g/n		
	Ondersteund apparaat	Router of schakelaar	Router	
Softwaregegevens	Configuratie	App of web		
	Taal	Engels		
	Bedrijfsmodus	AP/STA/AP+STA		

09 EU-verklaring van overeenstemming

NL

GoodWe Technologies Co., Ltd. verklaart hierbij dat het communicatie-apparaat zoals dat op de Europese markt wordt verkocht, voldoet aan de vereisten van de volgende richtlijnen:

- Richtlijn radioapparatuur 2014/53/EU (RED-richtlijn)
- Richtlijn inzake beperking van het gebruik van bepaalde gevaarlijke stoffen 2011/65/EU en (EU) 2015/863 (RoHS-richtlijn)
- Richtlijn betreffende afgedankte elektrische en elektronische apparatuur 2012/19/EU (WEEE-richtlijn)
- Verordening inzake de registratie en beoordeling van en de autorisatie en beperkingen ten aanzien van chemische stoffen (EG) nr. 1907/2006 (REACH)

Ga voor meer gedetailleerde conformiteitsverklaringen naar <https://en.goodwe.com>.

08 Dane techniczne

PL

Model		Wi-Fi/LAN Kit	WiFi Kit	WiFi Box
Dane ogólne	Napięcie wejściowe	5 V		
	Pobór mocy	≤ 2 W		
	Wymiary (dł. x szer. x śr. w mm)	102 x 49 x 32	96 x 49 x 32 lub 96 x 46 x 29	71.5 x 65x39.5
	Temperatura robocza	-30–60°C		
	Wilgotność robocza	0–100% RH (bez skraplania)		
	Wysokość robocza	<4000 m		
	Stopień ochrony przed wnikaniem	IP65		
Dane kom.	Port	RJ45	–	
	Przewód przedłużający LAN	0,5 m	–	
	Komunikacja	LAN lub WiFi	WiFi	
	Szybkość transmisji	UART: 115200bps Ethernet: 10Mbps /100Mbps	UART: 9600bps	
	Maks. przewód sieciowy, odległość przesyłu	100 m	–	
	Zakres częstotliwości	2.412GHz–2.472GHz		
	Obsługiwane standardy	802.11 b/g/n		
	Obsługiwane urządzenie	Router lub switch	Router	
Moc wyjściowa RF	< 20 dBm			
Dane oprogramowania	Konfiguracja	Aplikacja lub internet		
	Język	Angielski		
	Tryb pracy	AP/STA/AP+STA		

09 Deklaracja zgodności UE

PL

Firma GoodWe Technologies Co., Ltd. niniejszym oświadcza, że urządzenie komunikacyjne sprzedawane na rynku europejskim spełnia wymagania następujących dyrektyw:

- Dyrektywa o urządzeniach radiowych 2014/53/UE (RED)
- Dyrektywa o ograniczeniu stosowania substancji 2011/65/UE i (UE) 2015/863 (RoHS)
- Dyrektywa dot. zużytego sprzętu elektrycznego i elektronicznego (WEEE) 2012/19/UE
- Rejestracja, ocena, udzielenie zezwoleń i ograniczenia stosowania chemikaliów (WE) nr 1907/2006 (REACH)

Pełny tekst deklaracji zgodności UE można pobrać ze strony: <https://en.goodwe.com>.

08 Dados técnicos

PT

Modelo		Wi-Fi/LAN Kit	WiFi Kit	WiFi Box
Dados gerais	Tensão de entrada	5 V		
	Consumo de energia	≤ 2W		
	Dimensões (C x L x P mm)	102 x 49 x 32	96 x 49 x 32 ou 96 x 46 x 29	71,5 x 65 x 39,5
	Temperatura de serviço	-30 ~ 60 °C		
	Humidade de funcionamento	0 ~ 100% HR (Sem condensação)		
	Altitude de serviço	<4000 m		
	Classificação de proteção contra a entrada	IP65		
Dados de comunicação	Porta	RJ45	-	
	Cabo de extensão de LAN	0,5 m	-	
	Comunicação	LAN ou WiFi	WiFi	
	Velocidade de transmissão	UART: 115200bps Ethernet: 10Mbps /100Mbps	UART: 9600bps	
	Distância máx. de transmissão do cabo de rede	100 m	-	
	Gama de frequências	2.412 Ghz - 2.472 GHz		
	Normas suportadas	802.11 b/g/n		
	Dispositivo suportado	Router ou switch	Router	
Dados de software	Configuração	Aplicação ou Web		
	Idioma	Inglês		
	Modo de funcionamento	AP/STA/AP+STA		

09 Declaração de conformidade da UE

PT

GoodWe Technologies Co., Ltd. declara pela presente que o aparelho de comunicação vendido no mercado europeu cumpre os requisitos das seguintes diretivas:

- Diretiva de equipamento de rádio 2014/53/UE (DER)
- Diretiva relativa à restrição do uso de substâncias perigosas 2011/65/UE e (UE) 2015/863 (RoHS)
- Resíduos de equipamentos elétricos e eletrónicos 2012/19/UE
- Registo, Avaliação, Autorização e Restrição de Produtos Químicos (CE) N.º 1907/2006 (REACH)

Para declarações de conformidade mais detalhadas, visite <https://en.goodwe.com>.

08 Date tehnice
RO

Model		Wi-Fi/LAN Kit	WiFi Kit	WiFi Box
Generalități	Tensiune intrare	5 V		
	Putere consumată	≤ 2 W		
	Dimensiuni (L x H x A mm)	102 x 49 x 32	96 x 49 x 32 sau 96 x 46 x 29	71,5 x 65 x 39,5
	Temperatură de funcționare	-30 ~ 60°C		
	Umiditate de funcționare	0 ~ 100% umiditate relativă (fără condens)		
	Altitudine de funcționare	< 4000 m		
	Clasă de etanșeitate	IP65		
Port	comunicare	RJ45	-	
	Cablu prelungitor LAN	0,5 m	-	
	Comunicare	LAN sau Wi-Fi	Wi-Fi	
	Rată de transmisie	UART: 115200 bps Ethernet: 10 Mbps /100 Mbps	UART: 9600 bps	
	Distanță maximă transmisie cablu rețea	100 m	-	
	Interval frecvență	2,412 GHz - 2,472 GHz		
	Standarde acceptate	802.11 b/g/n		
	Dispozitiv acceptat	Router sau switch	Router	
Date software	Configurație	Aplicație sau web		
	Limbă	Engleză		
	Mod de lucru	AP/STA/AP+STA		

09 Declarație de conformitate UE
RO

GoodWe Technologies Co., Ltd. prin prezenta declară că dispozitivul de comunicație wireless comercializat pe piața europeană respectă cerințele următoarelor directive:

- Directiva 2014/53/UE privind echipamentele radio (RED)
- Directiva 2011/65/UE și 2015/863/UE privind restricționarea substanțelor periculoase (RoHS)
- Directiva 2012/19/UE privind deșeurile de echipamente electrice și electronice
- Înregistrarea, evaluarea, autorizarea și restricționarea produselor chimice (CE) nr. 1907/2006 (REACH)

Pentru declarații de conformitate mai detaliate, vizitați <https://en.goodwe.com>.

08 Technické údaje

SK

Model		Wi-Fi/LAN Kit	WiFi Kit	WiFi Box
Všeobecné informácie	Vstupné napätie	5 V		
	Spotreba energie	≤ 2 W		
	Rozmer (D x Š x Dmm)	102 x 49 x 32	96 x 49 x 32 alebo 96 x 46 x 29	71,5 x 65x39,5
	Prevádzková teplota	-30 ~ 60°C		
	Prevádzková vlhkosť	0 ~ 100% RH (bez kondenzácie)		
	Prevádzková výška	<4000 m		
	Stupeň ochrany proti vniknutiu	IP65		
Údaje o komunikácii	Port	RJ45	-	
	Predĺžovací kábel siete LAN	0,5 m	-	
	Komunikácia	LAN alebo Wi-Fi	WiFi	
	Rýchlosť prenosu	UART: 115200bps Ethernet: 10 Mbps/100 Mbps	UART: 9600 bps	
	Max. prenosová vzdialenosť sieťového kábla	100 m	-	
	Rozsah frekvencie	2,412GHz-2,472GHz		
	Podporované štandardy	802,11 b/g/n		
	Podporované zariadenie	Router alebo spínač	Router	
Softvérové údaje	Konfigurácia	Aplikácia alebo web		
	Jazyk	Angličtina		
	Pracovný režim	AP/STA/AP+STA		

09 Vyhlásenie EÚ o zhode

SK

Spoločnosť GoodWe Technologies Co., Ltd. týmto prehlasuje, že komunikačné zariadenie predávané na európskom trhu spĺňa požiadavky nasledujúcich smerníc:

- Nariadenie o rádiových zariadeniach (RED) 2014/53/EÚ
- Nariadenie o obmedzení používania nebezpečných látok (RoHS) 2011/65/EÚ a o
- odpade z elektrických a elektronických zariadení 2012/19/EÚ
- Nariadenie EP a Rady (ES) č. 1907/2006 o registrácii, hodnotení, autorizácii a obmedzovaní chemických látok (REACH)

Podrobnejšie vyhlásenia o zhode nájdete na stránke <https://en.goodwe.com>.

08 Tehnični podatki

SL

Model		Wi-Fi/LAN Kit	WiFi Kit	WiFi Box
Splošni podatki	Vhodna napetost	5 V		
	Poraba energije	≤ 2 W		
	Mere (D x Š x G)	102 x 49 x 32	96 x 49 x 32 ali 96 x 46 x 29	71,5 x 65 x 39,5
	Obratovalna temperatura	-30 ~ 60 °C		
	Obratovalna vlažnost	0~ 100 % rel. vl. (brez kondenzacije)		
	Obratovalna nadmorska višina	< 4000 m		
	Stopnja zaščite proti vdoru	IP65		
Komunikacijski podatki	Vrata	RJ45	-	
	Podaljševalni kabel LAN	0,5 m	-	
	Komunikacije	LAN ali WiFi	WiFi	
	Hitrost prenosa	UART: 115200bps Ethernet: 10Mbps /100Mbps	UART: 9600bps	
	Maks. dolžina omrežnega kabla	100 m	-	
	Frekvenčni obseg	2,412 GHz - 2,472 GHz		
	Podprti standardi	802.11 b/g/n		
	Podprte naprave	Usmerjevalnik ali stikalo	Usmerjevalnik	
Podatki o programski opremi	Konfiguracija	Aplikacija ali spletni dostop		
	Jezik	Angleški		
	Način delovanja	AP/STA/AP+STA		

09 Izjava EU o skladnosti

SL

Podjetje GoodWe Technologies Co., Ltd. izjavlja, da je komunikacijska naprava, ki se prodaja na evropskem trgu, skladna z zahtevami naslednjih direktiv:

- Direktiva o radijski opremi 2014/53/EU (RED)
- Direktiva o omejevanju uporabe nevarnih snovi 2011/65/EU in (EU) 2015/863 (RoHS)
- Direktiva o odpadni električni in elektronski opremi 2012/19/EU
- Uredba o o registraciji, evalvaciji, avtorizaciji in omejevanju kemikalij (EC) No 1907/2006 (REACH)

Za podrobnejše informacije glede skladnosti obiščite <https://en.goodwe.com>.

08 Tekniska data

SV

	Modell	Wi-Fi/LAN Kit	WiFi Kit	WiFi Box
Allmän information	Ingångsspänning	5 V		
	Energiförbrukning	≤ 2 W		
	Mått (L x B x D mm)	102 x 49 x 32	96 x 49 x 32 eller 96 x 46 x 29	71,5 x 65 x 39,5
	Arbetstemperatur	-30–60 °C		
	Driftfuktighet	0–100 % RH (icke-kondenserande)		
	Arbetshöjd	< 4 000 m		
	Kapslingsklass	IP65		
Kommdata-	port	RJ45	-	
	Förlängningskabel för LAN	0,5 m	-	
	Kommunikation	LAN eller wifi	Wifi	
	Överföringshastighet	UART: 115 200 bps Ethernet: 10 Mbps/100 Mbps	UART: 9 600 bps	
	Max. överföringsavstånd för nätverkskabel	100 m	-	
	Frekvensområde	2,412–2,472 GHz		
	Standarder som stöds	802.11 b/g/n		
	Enhet som stöds	Router eller switch	Router	
Programdata-	konfiguration	App eller webb		
	Språk	Engelska		
	Arbetsläge	AP/STA/AP+STA		

09 EU-försäkran om överensstämmelse

SV

GoodWe Technologies Co., Ltd. intygar härmed att kommunikationsenheten som säljs på den europeiska marknaden uppfyller kraven i följande direktiv:

- Radioutrustningsdirektivet 2014/53/EU (RED)
- Direktivet om begränsningar av farliga ämnen 2011/65/EU och (EU) 2015/863 (RoHS)
- Direktivet om avfall från elektrisk och elektronisk utrustning 2012/19/EU
- Direktivet om registrering, utvärdering, tillstånd och begränsningar av kemiska ämnen (EG) nr 1907/2006 (REACH)


För mer detaljerad information om överensstämmelse, besök <https://en.goodwe.com>.



Official Website

GoodWe Technologies Co., Ltd.

 No. 90 Zijin Rd., New District, Suzhou, 215011, China

 www.goodwe.com

 service@goodwe.com



340-00651-03

Local
Contacts